

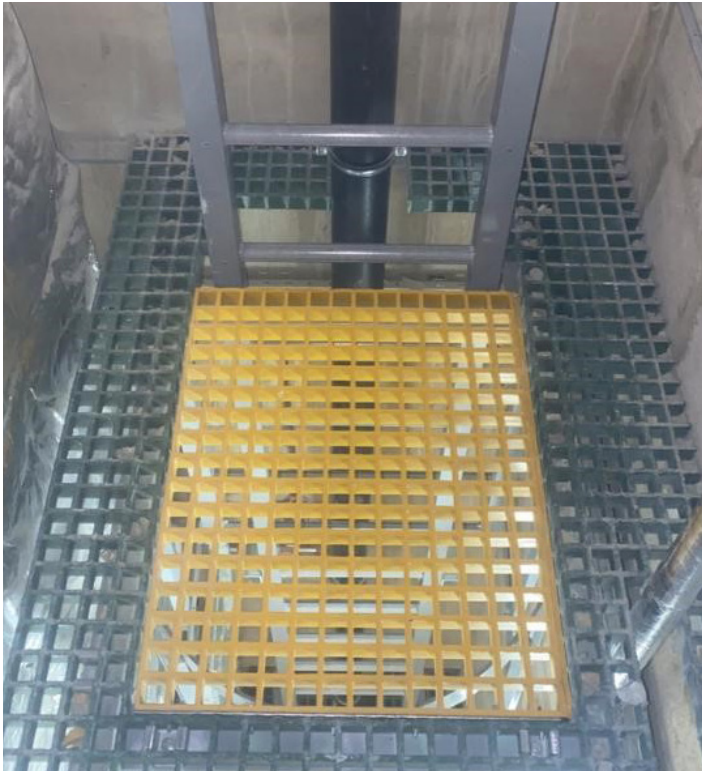
ROYAL COLLEGE OF MUSIC

ACCESS LADDER



Step on Safety

Construction Case Study



Situated in South Kensington, the home of science, arts and inspiration, and directly opposite the **Royal Albert Hall**, the **Royal College of Music** is one of the world's great conservatoires, training gifted musicians from all over the world for international careers as performers, conductors and composers. Opened in **1883** by the then Prince of Wales (later Edward VII), the RCM has trained some of the most prestigious figures in British and international music life, including composers such as **Holst, Vaughan Williams, Turnage** and **Britten**; conductors such as **Leopold Stokowski, Sir Colin Davis** and **Sir Roger Norrington** and instrumentalists such as **Sir James Galway, John Lill, Gervase de Peyer**, and **Natalie Clein**.

Bringing an older building up to code regarding health and safety is always a challenge. Modern amenities were squeezed into spaces as they became available, but the emphasis was always on preserving as much of the original building as possible; going back in – often decades later – to make those spaces safe for maintenance crews or to replace outdated systems that involves crawl-spaces, false walls and hidden hatches.

It was just such a request we received recently. A **GRP Cat Ladder** and **RiserDeck floor** with access hatch were required to allow work on the hidden pipework within a very narrow space. The ladder needed to be positioned in such a way that the pipe behind it wouldn't be kicked; the hatch would be small, so needed to be 100% snag-free and the ladder height required safety hoops to help prevent falls.

After drawings were approved by our client, the ladder was built onsite at **Step on Safety** and cut in half to allow it to be loaded onto a flat bed vehicle and to ensure it could be manoeuvred into position once it reached RCM. You can see from the photos that even the two-man installation team would have been a tight squeeze!

GRP is lightweight so the fact that only two people could be there to lift it into place wasn't a problem and being GRP, now the ladder is there, it will last for decades to come.

Find out how **Step on Safety** can fill the gaps in your Health & Safety certification by calling Amber on 01206 396 446.

FOR MORE INFORMATION

Call: **01206 396 446**

Email: sales@steponsafety.co.uk

Visit: www.steponsafety.co.uk